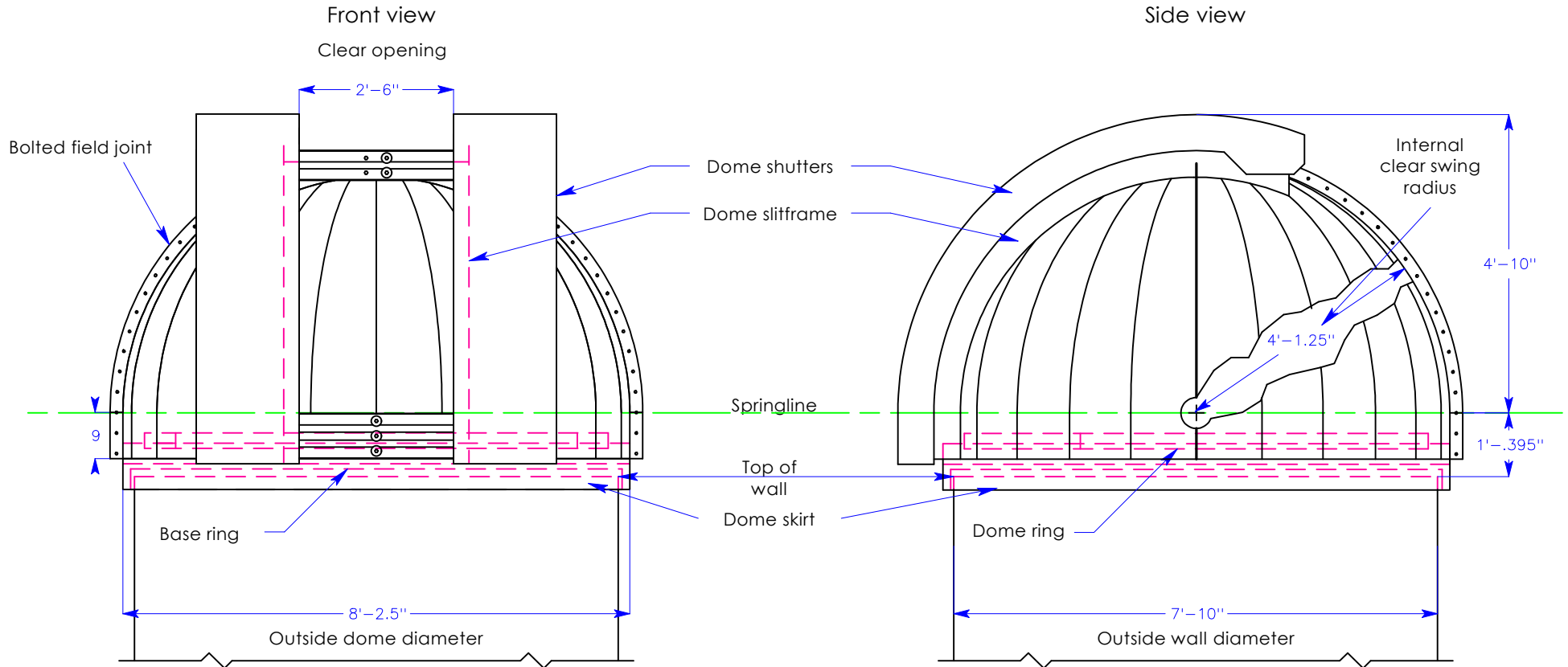


## 2.5 Meter Observa-Dome



**Features:**

1. All aluminum skin construction.
2. Factory tested to allow easy field assembly.
3. Proven bi-parting shutter design.
4. Fabricated steel base and dome tension rings.
5. Factory installed computer automation package available

*Approximate weights for .040" thick 3003 aluminum skin.*

Single skin rotating weight	550 lbs, 249 kg
Double skin rotating weight	700 lbs, 318 kg
Base ring weight including casters	200 lbs, 91 kg



Observa-Dome Labs, Inc  
 371 Commerce Park Drive  
 Jackson, MS 39213  
 1-800-647-5364  
 observa-dome.com

	Name	Date	Title	Date	Scale
	JJ	6/6/02	2.5 Meter Elevation	June 6, 2002	1:30
Created By	RC	6/21/02	Drawing No.	Revised	
			OBD 2.5 100		